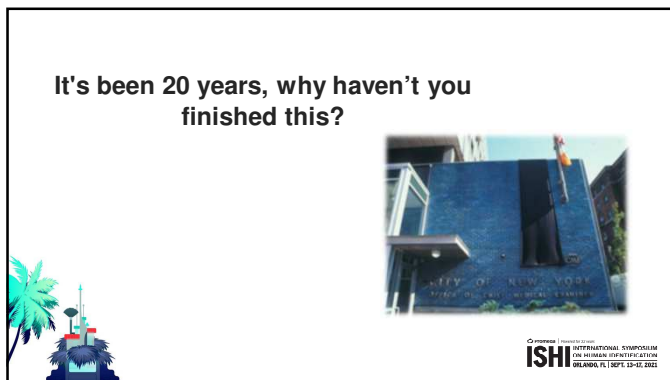
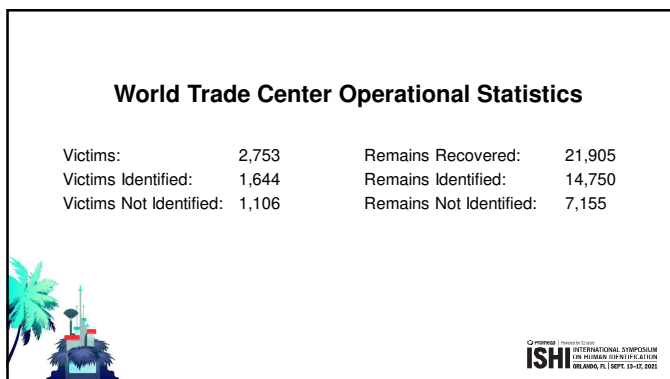


1



2



3

Challenges

Degradation and size
Comingling of remains
Software and databanking
Ante mortem collection
Limited in-house capacity
No system to track samples
No DNA Disaster Plan



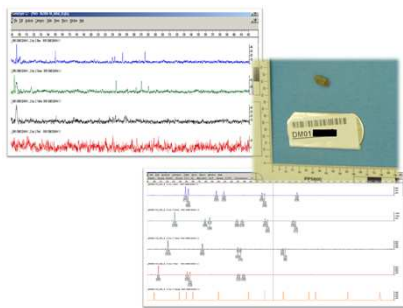
ISH INTERNATIONAL SYMPOSIUM
ON HUMAN IDENTIFICATION
ORLANDO, FL 10-12 SEPTEMBER 2021

4

- 38%** Phase I DNA profiles were generated with enough alleles to reach statistical threshold
- 45%** Phase II change in the STR kit, more robust grinding process
- 54%** Phase III mini-STRs, new bone optimization protocol on previously negative samples
- 59%** Phase IV new grinding protocol, demineralization, and amplification technique
- Phase V Next Generation Sequencing

ISH INTERNATIONAL SYMPOSIUM
ON HUMAN IDENTIFICATION
ORLANDO, FL 10-12 SEPTEMBER 2021

5

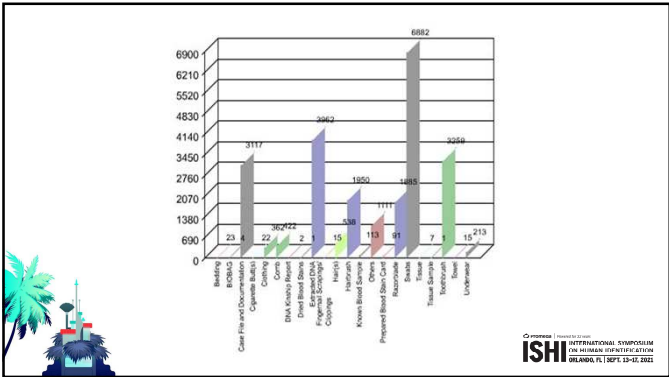


ISH INTERNATIONAL SYMPOSIUM
ON HUMAN IDENTIFICATION
ORLANDO, FL 10-12 SEPTEMBER 2021

6



7



8



9
